

Xtreme Cosmetic Products

compatible with eyelash extensions

Glideliner™ Long-Lasting Eye Pencil

Graphite - Xtreme Black - Midnight Blue - Plum - Xpresso - Golden Olive



Inspired by the desire to simplify the modern woman's beauty routine, GlideLiner™ combines the benefits of the liquid liner, with the application ease of a traditional pencil, while maintaining compatibility with Xtreme Lashes® Eyelash Extensions. The innovative sharpenable gel structure glides on gently and easily, allowing you to achieve a precise, defined line or a smoky, smudgy look. The silky-smooth, rich color sets quickly and stays put all day long!

- Innovative long-lasting gel technology
- Glides on easily and gently without tugging
- Easily achieve a precise, defined line or a smoky, smudgy look
- Blends upon application, then dries into a resilient, non-smear finish
- Vitamin E enriched
- Specially formulated to be compatible with eyelash extensions
- Enjoy effortless removal with Aloe-based Xtreme Eye Makeup Remover™ and Lint-Free Xtreme Applicators™.

Xtreme Eye Makeup Remover and Facial Cleanser™

Soothing Aloe Vera Juice-based formula gently cleanses and moisturizes skin while conditioning lashes and brows. Coconut-derived cleansing agent removes impurities and makeup while anti-oxidant and vitamin-rich botanical extracts including rosehip, chamomile, eyebright and cucumber calm, refresh and nourish and protect for a daily beauty treatment.

- Over 90% natural with no artificial colors, fragrances, dyes, or mineral oil
- Sulfate-free—won't irritate or strip your skin of natural oils
- Formulated to be used on eyelash extensions and natural lashes
- Ideal for all skin types, even sensitive skin



Xtreme Protective Coating™

Extend the life of your lash extensions! Unique formula coats and seals the attachment area between the extension and the natural lash, creating a protective barrier against oil, perspiration, dust and debris. Style, shape and hold curl while adding a subtle sheen – like hairspray for your lashes!

- Extends the life of extensions by 1 to 2 weeks, when used properly.
- Contours and holds curled lashes in place.
- Formulated for eyelash extensions and natural lashes.

Xtreme Length Mascara™

This water-resistant, lash thickening and lengthening formula gives eyelashes a natural defined look without clumps, flakes or smudges. Enriched with panthanol (vitamin B5) and beeswax, this color-rich mascara conditions lashes as it lengthens.

- Formulated for eyelash extensions and natural lashes.
- Ideal for sensitive eyes and contact lens safe.
- Enjoy effortless removal with Aloe-based Xtreme Eye Makeup Remover™ and Lint-Free Xtreme Applicators™.



Xtreme Cosmetic Products

compatible with eyelash extensions

Xtreme Volume Mascara™

It's time to turn up the volume! Each stroke of the precision, lash-separating brush delivers rich color, high gloss and eXtreme volume. A nourishing formula, enriched with botanical extracts, strengthens and conditions. Long-lasting and water-resistant for an all-day allure.

- Formulated for eyelash extensions and natural lashes.
- Ingredients such as Allantoin, Mushroom Extract, and Royal Jelly Extract nourish and rejuvenate the lashes.
- Extracts of Tea, Calendula, Parsley, Angelica, and Cornus (Dogwood Fruit) add shine and protection.
- Enjoy effortless removal with Aloe-based Xtreme Eye Makeup Remover™ and Lint-Free Xtreme Applicators™.



Heated Eyelash Curler

Add even more drama to your Xtreme Lashes® Eyelash Extensions with the Xtreme Heated Eyelash Curler™. This curler safely applies a long lasting curl through gentle heat and will not damage your Xtreme Lashes® Eyelash Extensions or your natural lashes as mechanical style curlers do.

- Works with eyelash extensions and natural lashes.
- Heats to 148° in 15 seconds
- Low battery and optimal temperature LED indicator



Deluxe Retractable Lash Styling Wand

Primp those lashes with panache! Alluring eyelashes deserve equally appealing accessories for their care. This Deluxe Retractable Lash Styling Wand, with refined detailing and elegant gold toned case, is destined to be every diva's delight. With the patented collar design, the brush glides smoothly from the barrel and returns to the housing for compact storage. A custom fitted cap ensures the tip stays tiptop and tidy when not in use.



Wishful Blinking™ Eye Shine

Iridescent Mirage - Sahara Sand - Diamond Dust - Arabian Night - Golden Oasis

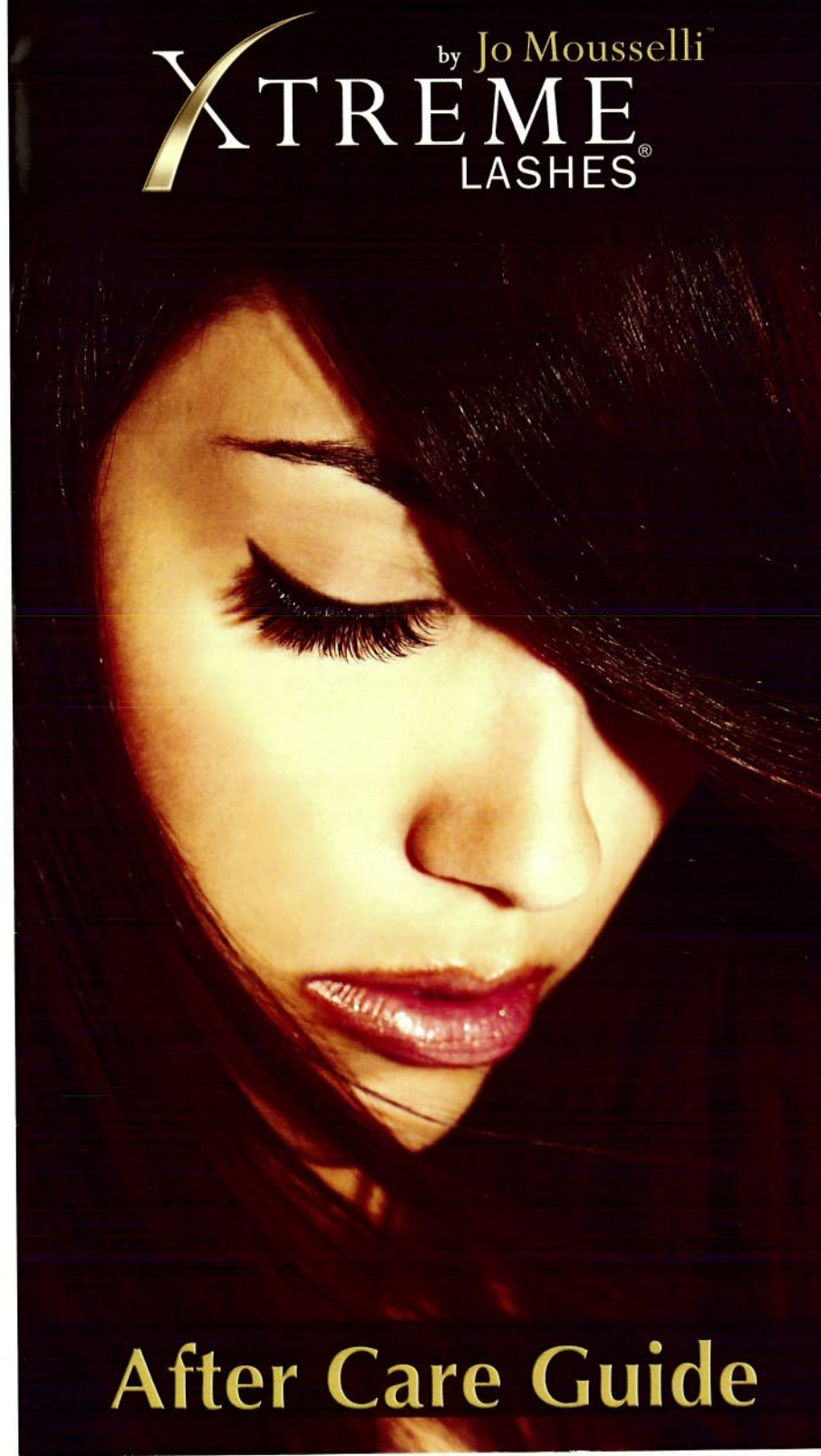
Whether you long for radiance or refinement, for elegance or excitement, Wishful Blinking™ Eye Shine is your wish come true. The delicate shimmer lights up the eyes with sophisticated style and just a touch of flirtatious flair. Apply it on lashes or lids for an instant twinkle or blend it on cheeks and brow bones for a glistening glow. It's a shadow, an eyeliner, a highlighter, a blush... whatever you wish it to be.

- Formulated with soothing Calendula and Chamomile extracts.
- Enjoy effortless removal with Aloe-based Xtreme Eye Makeup Remover™ and Lint-Free Xtreme Applicators™.



XTREME LASHES®

by Jo Mouselli™



After Care Guide

Thank you for choosing Xtreme Lashes® Eyelash Extensions!

You can enjoy your beautiful new lashes with little need to adjust your lifestyle. Proper care and maintenance of your new Xtreme Lashes® Eyelash Extensions will ensure they remain as beautiful and luscious as they are today!

During the first 48 hours

It takes 48 hours for the adhesive to cure (dry) thoroughly and yield a strong, durable bond. During this time the adhesive bond is vulnerable to moisture, steam, excessive heat, cosmetic ingredients coming into contact with the adhesive bond, and friction from rubbing and cleansing.

The following activities will result in a weaker bond and premature lash extension loss, and therefore should be avoided during the first 48 hours:

- Showering
- Exposure to heat, steam, sauna, friction
- Eye and eyelash cosmetics
- Sleeping on side or stomach
- Chemical treatments such as tinting and perming
- Irritating eye area treatments, such as strong chemical peels, skin resurfacing procedures, eyebrow waxing, and laser treatments

After the first 48 hours

The following activities will weaken the adhesive bond, dissolve the adhesive and result in premature lash extension loss, and therefore should be avoided:

- Excessive exposure to heat, steam, sauna, and friction
- Use of oil-based eye care products on or near your eyelashes, such as eye creams, eye serums, Vaseline® and cleansers.
- Use of waterproof cosmetic products on or near the lashes, including waterproof mascara and eyeliner.
- Excessive mascara
- Mechanical curlers
- Picking or pulling Xtreme Lashes® Eyelash Extensions
- Excessively rubbing your eyes

To properly care for and maintain your Xtreme Lashes® Eyelash Extensions, following these guidelines:



- Cleanse your lashes and your eyelids daily to maintain healthy and beautiful lashes and lash follicles. Use **Xtreme Eye Makeup Remover and Facial Cleanser™** and **Lint Free Xtreme Applicators™** to gently remove eye makeup and mascara.
 - **Lint Free Xtreme Applicators™** are highly absorbent yet release liquids easily and gently to remove mascaras and eyeliner from lashes without excessive friction that would weaken the bond.



- Groom your lashes daily using the **Xtreme Lashes® Deluxe Retractable Lash Styling Wand** to style your Xtreme Lashes® Eyelash Extensions into place.



- Use **Xtreme Lashes® GlideLiner™ Long Lasting Eye Pencil** and **Xtreme Lashes® Mascaras** which were developed to be compatible with Xtreme Lashes®.



- Although mascara is not necessary with Xtreme Lashes®, **Xtreme Lashes® Mascaras** can be used sparingly, on the tips only, to achieve an even more dramatic look. You may also use Xtreme Lashes® Mascaras on your lower lashes.



- An **Xtreme Heated Eyelash Curler™** can be used sparingly to help shape and curl lashes on the TIPS of the J-Curl lashes ONLY. (Avoid using the heated lash curler on C-Curl Lashes.)



- Apply **Xtreme Protective Coating™** to your new lashes once or twice per week to preserve the look and extend the life of your Xtreme Lashes®.



Your Next Appointment:

Date: _____

Time: _____

Notes: _____
